



# CORONADO<sup>®</sup>

STONE PRODUCTS



ARTISAN CRAFTED STONE VENEER



# TABLE OF CONTENTS



WEATHERED EDGE  
ETOWAH



SAWTOOTH LEDGE  
SUMMER COTTAGE



ITALIAN VILLA®  
VOLTERRA



EASTERN MOUNTAIN LEDGE®  
CARMEL MOUNTAIN



COUNTRY RUBBLE  
ASPEN

## FEATURED PRODUCTS

GRANITE PEAK (NEW PRODUCT) ..... 1  
WEATHERED EDGE (REVISED PRODUCT) ..... 2

## THE DESIGNER SERIES

SAWTOOTH LEDGE..... 5-6  
AMALFI LEDGE..... 7  
CORONADO STRIP STONE..... 8  
PLAYA VISTA LIMESTONE..... 9  
PRAIRIE STONE ..... 10  
3" SPLIT LIMESTONE .....11-12  
6" SPLIT LIMESTONE .....13-14  
INDUSTRIAL LEDGE..... 15  
ELEMENT LEDGESTONE..... 16

## VILLA STONE SERIES

VENETIAN VILLA® ..... 19-20  
ITALIAN VILLA® .....21-22  
TUSCAN VILLA® ..... 23-24  
FRENCH COUNTRY VILLA® ..... 25-26

## LEDGESTONE SERIES

MOUNTAIN STRIP STONE ..... 29  
ARTISAN LEDGE..... 30  
PRO-LEDGE®.....31-32  
CORONADO HONEY LEDGE..... 33-34  
QUICK STACK® ..... 35-36  
EASTERN MOUNTAIN LEDGE® ..... 37-38  
OLD WORLD LEDGE..... 39-40  
OLD COUNTRY LEDGE ..... 41-42  
ROCKY MOUNTAIN LEDGE ..... 43  
CANYON LEDGE.....44  
IDAHO DRYSTACK..... 45-46

## ASHLAR & RUBBLE SERIES

COUNTRY RUBBLE ..... 49-50  
TEXAS RUBBLE ..... 51  
CAROLINA RUBBLE..... 52  
COUNTRY CASTLE ..... 53  
SANTA BARBARA ..... 54  
BELGIAN CASTLE..... 55  
PAVILION STONE..... 56



SPLIT FIELDSTONE  
CARMEL MOUNTAIN



SMOOTH LIMESTONE  
CREAM



BARN WOODSTONE  
RUSTIC FARMHOUSE



SPECIAL USED BRICK  
RUSTIC BLEND



FLAGSTONE WALL CAP  
LOMPOC

# TABLE OF CONTENTS

## IRREGULAR SHAPED STONE SERIES

APPALACHIAN FIELDSTONE ..... 59-60  
SPLIT FIELDSTONE ..... 61  
RIVER ROCK ..... 62

## THE CLASSIC SERIES

URBANA SMOOTH..... 65  
URBANA SPLIT ..... 66  
8" CLASSIC JERUSALEM ..... 67  
SMOOTH LIMESTONE ..... 68  
FRENCH LIMESTONE..... 69  
CHISELED LIMESTONE ..... 70  
HILL COUNTRY LIMESTONE..... 71  
COLOSSEUM TRAVERTINE..... 72  
THE GETTY STONE..... 73  
SAND CANYON FLAGSTONE ..... 74

## WOODSTONE SERIES

BARN WOODSTONE ..... 77  
ROUGH CUT WOODSTONE ..... 78  
REFINED WOODSTONE..... 79-80

## THIN BRICK SERIES

SPECIAL USED BRICK ..... 83-84  
WIRECUT BRICK ..... 85-86  
BELGIAN BRICK ..... 87  
SCULPTURED BRICK ..... 88  
SICILIAN BRICK ..... 89  
ROMAN BRICK ..... 90  
NEW ENGLAND BRICK..... 91  
ADOBE BRICK ..... 92

## TRIM & ACCESSORIES

SILLS, LINTELS, MANTELS & HEARTHSTONES ..... 95  
WALL CAPS, POST CAPS, TRIM STONES, BRICK ACCESSORIES . 96

## TECHNICAL DATA

TECHNICAL DATA..... 99-100  
CORONADO STONE SIZES ..... 101  
STONE COLOR INDEX & PROJECT IMAGE CREDITS.. 102  
LIMITED WARRANTY..... 103  
NATIONWIDE MANUFACTURING..... 104

COVER IMAGE: 3" SPLIT LIMESTONE - SUMMIT GREY



GRANITE PEAK



WEATHERED EDGE



GRANITE PEAK - WHITE



GRANITE PEAK  
SILVER ASH



GRANITE PEAK  
SUMMER COTTAGE



GRANITE PEAK  
VISTA POINTE



GRANITE PEAK  
MOUNT VERNON



GRANITE PEAK  
NORTHLAND



GRANITE PEAK  
WHITE



WEATHERED EDGE - ETOWAH



WEATHERED EDGE  
ETOWAH



WEATHERED EDGE  
NORTHLAND



WEATHERED EDGE  
VISTA POINTE





# THE DESIGNER SERIES

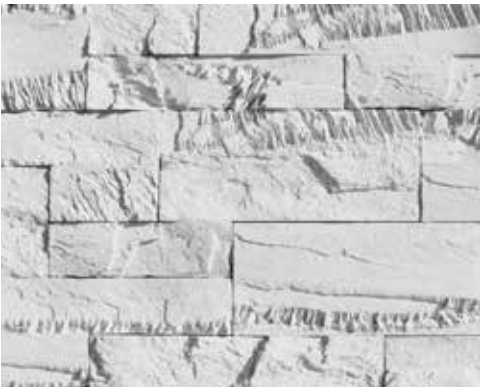




SAWTOOTH LEDGE - SUMMER COTTAGE



SAWTOOTH LEDGE - MOUNT VERNON



SAWTOOTH LEDGE  
WHITE



SAWTOOTH LEDGE  
SUMMER COTTAGE



SAWTOOTH LEDGE  
SILVER ASH



SAWTOOTH LEDGE  
NORTHLAND



SAWTOOTH LEDGE  
MOUNT VERNON



SAWTOOTH LEDGE  
VISTA POINTE



AMALFI LEDGE



CORONADO STRIP STONE



AMALFI LEDGE - SALERNO



CORONADO STRIP STONE - FAWN



AMALFI LEDGE  
WINTER ALPS



AMALFI LEDGE  
POMPEII



AMALFI LEDGE  
RAVELLO



CORONADO STRIP STONE  
BLACK FOREST



CORONADO STRIP STONE  
FAWN



CORONADO STRIP STONE  
WHITE



PLAYA VISTA LIMESTONE



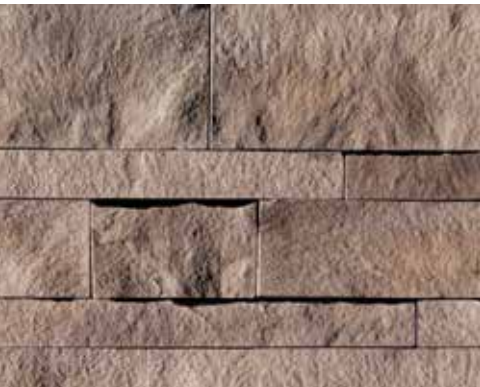
PRAIRIE STONE



PLAYA VISTA LIMESTONE - CREAM



PRAIRIE STONE - GREY GRANITE



PLAYA VISTA LIMESTONE  
WALNUT



PLAYA VISTA LIMESTONE  
SUMMIT GREY



PLAYA VISTA LIMESTONE  
CREAM



PRAIRIE STONE  
GREY GRANITE



PRAIRIE STONE  
MOCHA GRANITE



PRAIRIE STONE  
SMOKE



3" SPLIT LIMESTONE



3" SPLIT LIMESTONE - WALNUT

3" SPLIT LIMESTONE



3" SPLIT LIMESTONE - CREAM



3" SPLIT LIMESTONE  
SUMMIT GREY



3" SPLIT LIMESTONE  
WALNUT



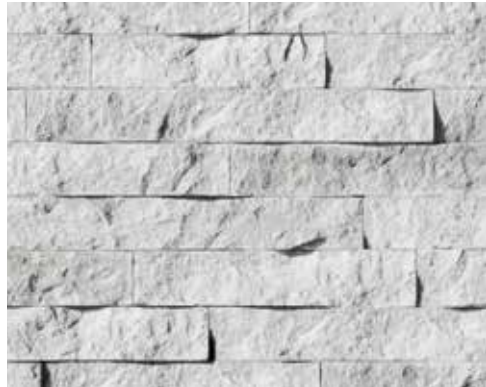
3" SPLIT LIMESTONE  
VISTA POINTE



3" SPLIT LIMESTONE  
BLACK FOREST



3" SPLIT LIMESTONE  
CREAM



3" SPLIT LIMESTONE  
WHITE



6" SPLIT LIMESTONE



6" SPLIT LIMESTONE - CREAM

6" SPLIT LIMESTONE



6" SPLIT LIMESTONE - CREAM



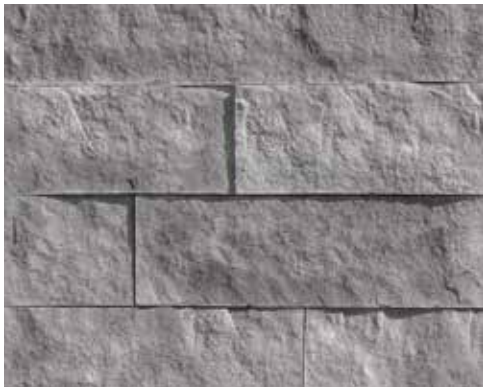
6" SPLIT LIMESTONE  
WALNUT



6" SPLIT LIMESTONE  
VISTA POINTE



6" SPLIT LIMESTONE  
BLACK FOREST



6" SPLIT LIMESTONE  
SUMMIT GREY



6" SPLIT LIMESTONE  
CREAM



6" SPLIT LIMESTONE  
WHITE



INDUSTRIAL LEDGE



INDUSTRIAL LEDGE - SHALE GREY



INDUSTRIAL LEDGE  
BLACKENED OAK



INDUSTRIAL LEDGE  
SHALE GREY



INDUSTRIAL LEDGE  
OAKBROOK

ELEMENT LEDGESTONE



ELEMENT LEDGE - SILVER ASH



ELEMENT LEDGESTONE  
SILVER ASH



ELEMENT LEDGESTONE  
BIRCH GROVE



ELEMENT LEDGESTONE  
VISTA POINTE



ELEMENT LEDGESTONE  
MOUNT VERNON



ELEMENT LEDGESTONE  
NORTHLAND



ELEMENT LEDGESTONE  
WHITE





# VILLA STONE SERIES





VENETIAN VILLA® - COASTAL BROWN (DRY STACKED)



VENETIAN VILLA® - MADISON COUNTY (GROUTED)



VENETIAN VILLA®  
CHALK (DRY STACKED)



VENETIAN VILLA®  
SUNSET BLEND (GROUTED)



VENETIAN VILLA®  
COASTAL BROWN (GROUTED)



VENETIAN VILLA®  
MADISON COUNTY (GROUTED)



VENETIAN VILLA®  
GREY (GROUTED)



VENETIAN VILLA®  
PALAZZO (DRY STACKED)





ITALIAN VILLA® - PROVO CANYON GREY



ITALIAN VILLA® - VOLTERRA



ITALIAN VILLA® - VOLTERRA



ITALIAN VILLA®  
PROVO CANYON GREY



ITALIAN VILLA®  
VERONA



ITALIAN VILLA®  
CHABLIS



ITALIAN VILLA®  
DAKOTA BROWN



ITALIAN VILLA®  
VOLTERRA



ITALIAN VILLA®  
CHAMPAGNE





TUSCAN VILLA® - FLORENTINE



TUSCAN VILLA® - PRAIRIE MOSS



TUSCAN VILLA®  
DAKOTA BROWN



TUSCAN VILLA®  
SEVILLE



TUSCAN VILLA®  
FLORENTINE



TUSCAN VILLA®  
COAL



TUSCAN VILLA®  
PRAIRIE MOSS



TUSCAN VILLA®  
CHAMPAGNE





FRENCH COUNTRY VILLA® - VOLTERRA



FRENCH COUNTRY VILLA® - GREY QUARTZITE



FRENCH COUNTRY VILLA®  
VOLTERRA



FRENCH COUNTRY VILLA®  
COAL



FRENCH COUNTRY VILLA®  
VERONA



FRENCH COUNTRY VILLA®  
BORDEAUX



FRENCH COUNTRY VILLA®  
CHAMPAGNE



FRENCH COUNTRY VILLA®  
GREY QUARTZITE





# LEDGESTONE SERIES



MOUNTAIN STRIP STONE



ARTISAN LEDGE



MOUNTAIN STRIP STONE - BROOKSIDE



ARTISAN LEDGE - CATHEDRAL GREY



MOUNTAIN STRIP STONE  
BROOKSIDE



MOUNTAIN STRIP STONE  
CHABLIS



MOUNTAIN STRIP STONE  
CAPE COD GREY



ARTISAN LEDGE  
HURON



ARTISAN LEDGE  
BIRCH GROVE



ARTISAN LEDGE  
CATHEDRAL GREY





PRO-LEDGE® - BLACK FOREST



PRO-LEDGE® - BROOKSIDE



PRO-LEDGE®  
OAKBROOK



PRO-LEDGE®  
HURON



PRO-LEDGE®  
BROOKSIDE



PRO-LEDGE® - WHITE



PRO-LEDGE®  
BLACK FOREST



PRO-LEDGE®  
CATHEDRAL GREY



PRO-LEDGE®  
WHITE





CORONADO HONEY LEDGE - SHASTA



CORONADO HONEY LEDGE  
SHASTA



CORONADO HONEY LEDGE  
GREY QUARTZITE



CORONADO HONEY LEDGE  
HURON



CORONADO HONEY LEDGE - CARMEL MOUNTAIN



CORONADO HONEY LEDGE  
PALOMINO



CORONADO HONEY LEDGE  
CARMEL MOUNTAIN



CORONADO HONEY LEDGE  
ROCKY MOUNTAIN RUNDLE





QUICK STACK® - CAPE COD GREY



QUICK STACK® - CARMEL MOUNTAIN



QUICK STACK®  
ANTIQUE CREAM



QUICK STACK®  
CAPE COD GREY



QUICK STACK®  
CARMEL MOUNTAIN



QUICK STACK® - CATHEDRAL GREY



QUICK STACK®  
CATHEDRAL GREY



QUICK STACK®  
COASTAL BROWN



QUICK STACK®  
ASPEN





EASTERN MOUNTAIN LEDGE® - DAKOTA BROWN



EASTERN MOUNTAIN LEDGE®  
CHALK



EASTERN MOUNTAIN LEDGE®  
CHABLIS



EASTERN MOUNTAIN LEDGE®  
VISTA POINTE



EASTERN MOUNTAIN LEDGE® - CARMEL MOUNTAIN



EASTERN MOUNTAIN LEDGE®  
GREY QUARTZITE



EASTERN MOUNTAIN LEDGE®  
PROVO CANYON GREY



EASTERN MOUNTAIN LEDGE®  
ETOWAH



EASTERN MOUNTAIN LEDGE®  
COASTAL BROWN



EASTERN MOUNTAIN LEDGE®  
PALMETTO BLEND



EASTERN MOUNTAIN LEDGE®  
HURON





OLD WORLD LEDGE - BIRCH GROVE (DRY STACKED)



OLD WORLD LEDGE  
MONARCH (GROUTED)



OLD WORLD LEDGE  
BIRCH GROVE (DRY STACKED)



OLD WORLD LEDGE  
CAPE COD GREY (DRY STACKED)



OLD WORLD LEDGE  
ANTIQUE CREAM (DRY STACKED)



OLD WORLD LEDGE  
VISTA POINTE (DRY STACKED)



OLD WORLD LEDGE  
GREY QUARTZITE (GROUTED)



OLD WORLD LEDGE - HURON (DRY STACKED)



OLD WORLD LEDGE  
ETOWAH (GROUTED)



OLD WORLD LEDGE  
CHABLIS (DRY STACKED)



OLD WORLD LEDGE  
HURON (DRY STACKED)





OLD COUNTRY LEDGE - BANFF (DRY STACKED)



OLD COUNTRY LEDGE  
HURON (DRY STACKED)



OLD COUNTRY LEDGE  
GREYCLIFFE (DRY STACKED)



OLD COUNTRY LEDGE  
BANFF (DRY STACKED)



OLD COUNTRY LEDGE - CARMEL MOUNTAIN (DRY STACKED)



OLD COUNTRY LEDGE  
MONARCH (GROUTED)



OLD COUNTRY LEDGE  
CAPE COD GREY (DRY STACKED)



OLD COUNTRY LEDGE  
ETOWAH (GROUTED)



OLD COUNTRY LEDGE  
CHALK (DRY STACKED)



OLD COUNTRY LEDGE  
COASTAL BROWN (GROUTED)



OLD COUNTRY LEDGE  
CARMEL MOUNTAIN (GROUTED)



ROCKY MOUNTAIN LEDGE



CANYON LEDGE



ROCKY MOUNTAIN LEDGE - GREYCLIFFE (GROUTED)



CANYON LEDGE - DAKOTA BROWN (GROUTED)



ROCKY MOUNTAIN LEDGE  
BITTERROOT (GROUTED)



ROCKY MOUNTAIN LEDGE  
GREYCLIFFE (DRY STACKED)



ROCKY MOUNTAIN LEDGE  
BLACK RUNDLE (DRY STACKED)



CANYON LEDGE  
CAPE COD GREY (DRY STACKED)



CANYON LEDGE  
DAKOTA BROWN (DRY STACKED)



CANYON LEDGE  
BROOKSIDE (DRY STACKED)

SQUARE FOOT COVERAGE IS BASED ON INSTALLATION WITH A 1/2" MORTAR JOINT.  
ADDITIONAL COLORS MAY BE AVAILABLE AT AN UPCHARGE. ALL SIZES ARE NOMINAL.

SQUARE FOOT COVERAGE IS BASED ON INSTALLATION WITH A 1/2" MORTAR JOINT.  
ADDITIONAL COLORS MAY BE AVAILABLE AT AN UPCHARGE. ALL SIZES ARE NOMINAL.





IDAHO DRYSTACK - ANTIQUE BUFF



IDAHO DRYSTACK - CARMEL MOUNTAIN



IDAHO DRYSTACK  
ANTIQUÉ BUFF



IDAHO DRYSTACK  
GREY QUARTZITE



IDAHO DRYSTACK  
CAPE COD GREY



IDAHO DRYSTACK  
BIRCH GROVE



IDAHO DRYSTACK  
VISTA POINTE



IDAHO DRYSTACK  
CARMEL MOUNTAIN





# ASHLAR & RUBBLE SERIES





COUNTRY RUBBLE - GREY QUARTZITE (DRY STACKED)



COUNTRY RUBBLE - ASPEN (GROUTED)



COUNTRY RUBBLE  
ANTIQUE CREAM (DRY STACKED)



COUNTRY RUBBLE  
TEXAS CREAM (GROUTED)



COUNTRY RUBBLE  
GREY QUARTZITE (GROUTED)



COUNTRY RUBBLE  
DAKOTA BROWN (GROUTED)



COUNTRY RUBBLE  
COASTAL BROWN (DRY STACKED)



COUNTRY RUBBLE  
ASPEN (DRY STACKED)



TEXAS RUBBLE



CAROLINA RUBBLE



TEXAS RUBBLE - TEXAS CREAM



CAROLINA RUBBLE - SANDSTONE



TEXAS RUBBLE  
SUMMER COTTAGE



TEXAS RUBBLE  
TEXAS CREAM



TEXAS RUBBLE  
CAPE COD GREY



CAROLINA RUBBLE  
SANDSTONE



CAROLINA RUBBLE  
SUMMER COTTAGE



CAROLINA RUBBLE  
CATHEDRAL GREY





COUNTRY CASTLE - HURON (GROUTED)



SANTA BARBARA - BROOKSHIRE (ASHLAR PATTERN)



COUNTRY CASTLE  
DAKOTA BROWN (GROUTED)



COUNTRY CASTLE  
HURON (GROUTED)



COUNTRY CASTLE  
CHALK (GROUTED)



SANTA BARBARA  
CHALK (ASHLAR PATTERN)



SANTA BARBARA  
TEXAS CREAM (ASHLAR PATTERN)



SANTA BARBARA  
BROOKSHIRE (ASHLAR PATTERN)





BELGIAN CASTLE - CHABLIS (DRY STACKED)



PAVILION STONE - PINE CREEK



BELGIAN CASTLE  
BEAR CREEK (DRY STACKED)



BELGIAN CASTLE  
CHABLIS (GROUTED)



BELGIAN CASTLE  
BROOKSIDE (DRY STACKED)



PAVILION STONE  
PINE CREEK



PAVILION STONE  
NEWPORT GREY



PAVILION STONE  
NORTHLAND





APPALACHIAN FIELDSTONE - MOUNTAIN SUNSET

IRREGULAR SHAPED STONE SERIES





APPALACHIAN FIELDSTONE - GREY QUARTZITE



APPALACHIAN FIELDSTONE - MOUNTAIN SUNSET



APPALACHIAN FIELDSTONE  
MOUNTAIN SUNSET



APPALACHIAN FIELDSTONE  
BIRCH GROVE



APPALACHIAN FIELDSTONE  
GREY QUARTZITE



SPLIT FIELDSTONE



RIVER ROCK



SPLIT FIELDSTONE - CARMEL MOUNTAIN



RIVER ROCK - SIENNA BROWN



SPLIT FIELDSTONE  
LOMDOC



SPLIT FIELDSTONE  
CARMEL MOUNTAIN



SPLIT FIELDSTONE  
DAKOTA BROWN



RIVER ROCK  
RENO BLEND



RIVER ROCK  
SIENNA BROWN



RIVER ROCK  
DESERT RUST





# THE CLASSIC SERIES

12" X 24" CHISELED LIMESTONE - CREAM  
16" X 24" COLOSSEUM TRAVERTINE - ROMAN



URBANA SMOOTH (8"x16")



URBANA SMOOTH - SILVER ASH

URBANA SPLIT (8"x16")



URBANA SPLIT - GREY GRANITE



URBANA SMOOTH  
FRENCH WHITE



URBANA SMOOTH  
COUNTRY BEIGE



URBANA SMOOTH  
SILVER ASH



URBANA SPLIT  
SMOKE



URBANA SPLIT  
GREY GRANITE



URBANA SPLIT  
FRENCH WHITE



8" CLASSIC JERUSALEM



SMOOTH LIMESTONE (12"x24")



8" CLASSIC JERUSALEM - SAHARA BEIGE



SMOOTH LIMESTONE - CREAM



8" CLASSIC JERUSALEM  
SILVER ASH



8" CLASSIC JERUSALEM  
SAHARA BEIGE



8" CLASSIC JERUSALEM  
CAYENNE



SMOOTH LIMESTONE  
HARVARD GREY



SMOOTH LIMESTONE  
CREAM



SMOOTH LIMESTONE  
WHITE SANDS



# FRENCH LIMESTONE (12"x24")





FRENCH LIMESTONE - COUNTRY BEIGE



FRENCH LIMESTONE  
FRENCH WHITE



FRENCH LIMESTONE  
COUNTRY BEIGE

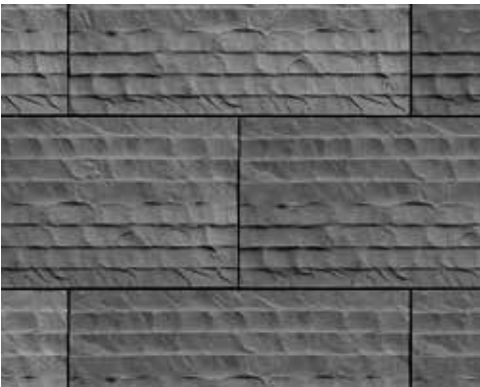


FRENCH LIMESTONE  
SILVER ASH

# CHISELED LIMESTONE (12"x24")



CHISELED LIMESTONE - CREAM



CHISELED LIMESTONE  
BLACK FOREST



CHISELED LIMESTONE  
SILVER ASH



CHISELED LIMESTONE  
CREAM





HILL COUNTRY LIMESTONE - CREAM



HILL COUNTRY LIMESTONE  
CREAM



HILL COUNTRY LIMESTONE  
CHALK



HILL COUNTRY LIMESTONE  
SILVER ASH



COLOSSEUM TRAVERTINE - ROMAN



COLOSSEUM TRAVERTINE  
ROMAN



COLOSSEUM TRAVERTINE  
MUSHROOM



COLOSSEUM TRAVERTINE  
BLACK FOREST



THE GETTY STONE (16"x24")



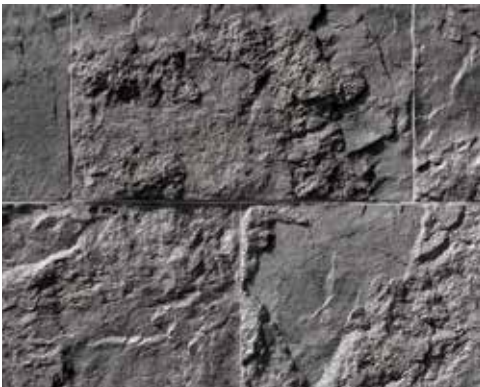
THE GETTY STONE - EMBASSY BLEND



THE GETTY STONE  
EMBASSY BLEND



THE GETTY STONE  
SILVER ASH



THE GETTY STONE  
BLACK FOREST

SAND CANYON FLAGSTONE (16"x30")



SAND CANYON FLAGSTONE - DESERT BEIGE



SAND CANYON FLAGSTONE  
SILVER ASH



SAND CANYON FLAGSTONE  
DESERT BEIGE



SAND CANYON FLAGSTONE  
CREAM







BARN WOODSTONE



ROUGH CUT WOODSTONE



BARN WOODSTONE - CANNERY BLEND



ROUGH CUT WOODSTONE - DEADWOOD



BARN WOODSTONE  
RUSTIC FARMHOUSE



BARN WOODSTONE  
CANNERY BLEND



BARN WOODSTONE  
OLD FRONTIER



ROUGH CUT WOODSTONE  
RUSTIC CEDAR



ROUGH CUT WOODSTONE  
CEDAR



ROUGH CUT WOODSTONE  
DEADWOOD

SQUARE FOOT COVERAGE IS BASED ON INSTALLATION WITH TIGHTLY-FITTED JOINTS. ADDITIONAL COLORS MAY BE AVAILABLE AT AN UPCHARGE. ALL SIZES ARE NOMINAL.

SQUARE FOOT COVERAGE IS BASED ON INSTALLATION WITH TIGHTLY-FITTED JOINTS. ADDITIONAL COLORS MAY BE AVAILABLE AT AN UPCHARGE. ALL SIZES ARE NOMINAL.





REFINED WOODSTONE - BLACKENED OAK



REFINED WOODSTONE - ANTIQUE WHITE



REFINED WOODSTONE - BLACKENED OAK



REFINED WOODSTONE  
BLACKENED OAK



REFINED WOODSTONE  
DEADWOOD



REFINED WOODSTONE  
ANTIQUE WHITE





THIN BRICK SERIES





2 1/2" x 8" SPECIAL USED BRICK - EAGLE BUFF



2 1/2" x 8" SPECIAL USED BRICK - RUSTIC BLEND



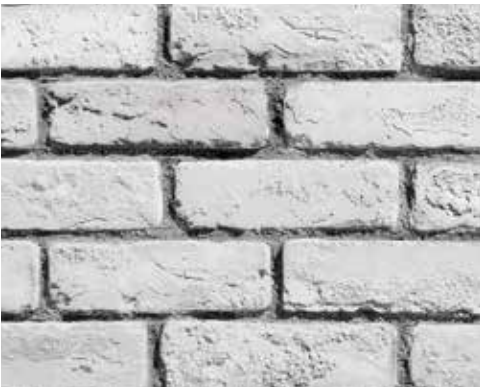
2 1/2" x 8" SPECIAL USED BRICK  
BEAR CREEK



2 1/2" x 8" SPECIAL USED BRICK  
WOLF GREY



2 1/2" x 8" SPECIAL USED BRICK  
EAGLE BUFF



2 1/2" x 8" SPECIAL USED BRICK  
ICEBERG



2 1/2" x 8" SPECIAL USED BRICK  
WINTER OAK



2 1/2" x 8" SPECIAL USED BRICK  
GLACIER

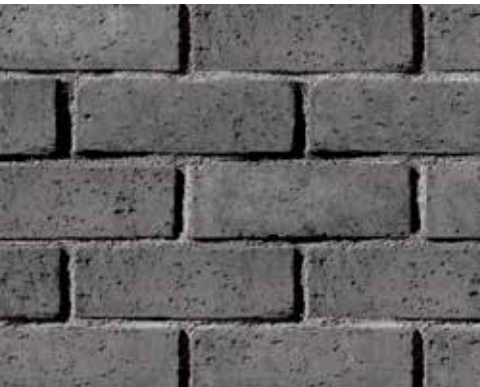




2 1/2" x 8" WIRECUT BRICK - WOLF GREY



2 1/2" x 8" WIRECUT BRICK - LA JOLLA BLEND



2 1/2" x 8" WIRECUT BRICK  
BLACK FOREST



2 1/2" x 8" WIRECUT BRICK  
WOLF GREY



2 1/2" x 8" WIRECUT BRICK  
COTTONWOOD



2 1/2" x 8" WIRECUT BRICK  
LA JOLLA BLEND



2 1/2" x 8" WIRECUT BRICK  
ICEBERG



2 1/2" x 8" WIRECUT BRICK  
GLACIER



BELGIAN BRICK



SCULPTURED BRICK



2 1/2" x 8" BELGIAN BRICK - BROOKSIDE



2 1/2" x 8" SCULPTURED BRICK - EAGLE BUFF



2 1/2" x 8" BELGIAN BRICK  
BEAR CREEK



2 1/2" x 8" BELGIAN BRICK  
EAGLE BUFF



2 1/2" x 8" BELGIAN BRICK  
BROOKSIDE



2 1/2" x 8" SCULPTURED BRICK  
EAGLE BUFF



2 1/2" x 8" SCULPTURED BRICK  
GLACIER



2 1/2" x 8" SCULPTURED BRICK  
WOLF GREY





2 1/2" x 8" SICILIAN BRICK - FERRARA BLEND



2 1/4" x 10" ROMAN BRICK - MEZZANO



2 1/2" x 8" SICILIAN BRICK  
FERRARA BLEND



2 1/2" x 8" SICILIAN BRICK  
MARSALA BLEND



2 1/2" x 8" SICILIAN BRICK  
WOLF GREY



2 1/4" x 10" ROMAN BRICK  
MEZZANO



2 1/4" x 10" ROMAN BRICK  
SORANO



2 1/4" x 10" ROMAN BRICK  
WINTER OAK



NEW ENGLAND BRICK



ADOBE BRICK



3" x 10" NEW ENGLAND BRICK - CHARLESTON



4" x 16" ADOBE BRICK - HAYSTACK



3" x 10" NEW ENGLAND BRICK  
CHARLESTON



3" x 10" NEW ENGLAND BRICK  
DAKOTA BROWN



3" x 10" NEW ENGLAND BRICK  
BEAR CREEK



4" x 16" ADOBE BRICK  
HAYSTACK



4" x 16" ADOBE BRICK  
SALTILLO



4" x 16" ADOBE BRICK  
SIENNA





# TRIM & ACCESSORIES



# TRIM & ACCESSORIES



## STANDARD COLOR OPTIONS



## SILLS



## LINTELS



## MANTELS



## HEARTHSTONES



# TRIM & ACCESSORIES

## WALL & POST CAPS



## BOXES & ARCHITECTURAL TRIM STONES



## BRICK ACCESSORIES









# TECHNICAL DATA

## TECHNICAL DATA

Coronado® stone veneer is manufactured to meet or exceed specifications for all major code approvals. Independent testing confirms compliance with ICC-ES AC51 for Precast Stone Veneer. Always check your local building codes before installing stone.


**Weight:** The average packaged weight of Coronado® stone veneer is 8 to 12 lbs. per square foot. Weight varies with thickness.

**Non-combustible:** Testing on Coronado® stone veneer showed zero flame spread and zero smoke development.


**Integral Colors:** Coronado®’s production process results in a product which maintains a natural stone appearance even after many years of exposure to the elements.

## APPROVALS


Coronado® stone veneer has been tested by independent laboratories and has been approved for its intended use by:



ICC The International Conference of Building Officials. Report ESR-2598



Texas Department of Insurance Product Approval Code. Evaluation ID EC-101



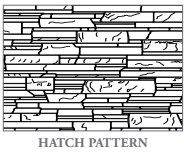
Florida Department of Business & Professional Regulation Approval Code. Evaluation FL31373

## TECHNICAL DOWNLOADS

Download an extensive collection of technical data and specification sheets.

- Product Specification Sheets
- Technical Data
- Cross-Section Details
- Hatch Patterns
- Stone Tileable Textures

[www.Coronado.com/ArchitecturalResources](http://www.Coronado.com/ArchitecturalResources)



## STONE VISUALIZER

To help you conceptualize your next residential or commercial project, visit our FREE Visualizer Tool. Simply click a template or upload your own photo to render our stone on top of it!

<https://Coronado.Renoworks.com>



## TESTING DATA

### MATERIALS:

- **Cement** ASTM C150
- **Sand** ASTM C144 or C33
- **Aggregate** ASTM C33 or C330

### TESTING:

- **Shear Bond Test** Tested in accordance with ASTM C482 Greater than 50 psi
- **Water Absorption** Tested in accordance with section 3.1.4 & 4.6 of ICC-ES AC51
- **Freeze / Thaw** Tested in accordance with ASTM C67 Less than 3% mass loss
- **Unit Weight** Shipping weight is less than 15 lbs. per sq. ft. Density is determined in accordance with ASTM C567
- **Compressive Strength** Tested in accordance with ASTM C39 Greater than 1800 psi
- **Tensile Strength** Tested in accordance with ASTM C190
- **Flexural Strength** Tested in accordance with ASTM C348

## INSTALLATION GUIDES

- Standard Stone Installation Guide (English and Spanish)
- WoodStone Installation Guide
- Classic Series Installation Guide (English and Spanish)
- Industrial Ledge Installation Guide
- Thin Brick Installation Guide
- Coronado Stone Additional Tech Notes

[www.Coronado.com/InstallationGuides](http://www.Coronado.com/InstallationGuides)

## FIND INSPIRATION



### ⚠ PROP 65 WARNING

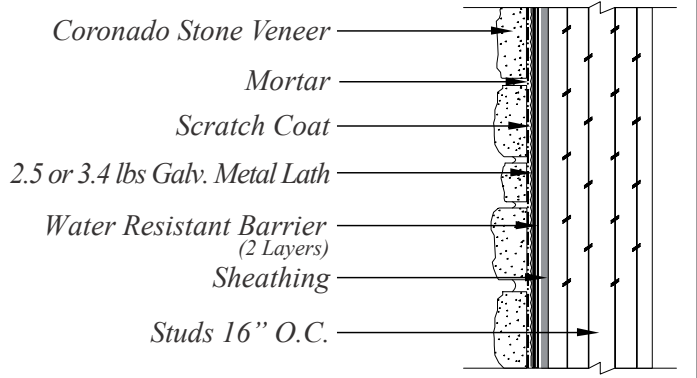
Our cement stone veneer products contain silica, crystalline (airborne particles of respirable size), which is known to the State of California to cause cancer. A properly fitted NIOSH approved particulate filtering facepiece should be used during dust generating processes, including cutting, sawing, and/or drilling. For more information go to [www.P65Warnings.ca.gov](http://www.P65Warnings.ca.gov).

## ASSOCIATIONS

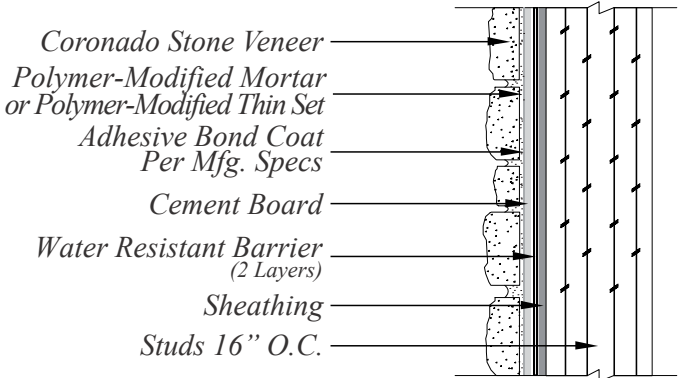


# TECHNICAL DATA

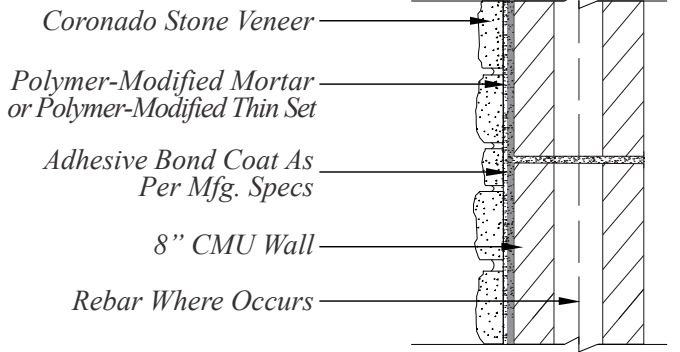
## WOOD FRAME WITH SHEATHING



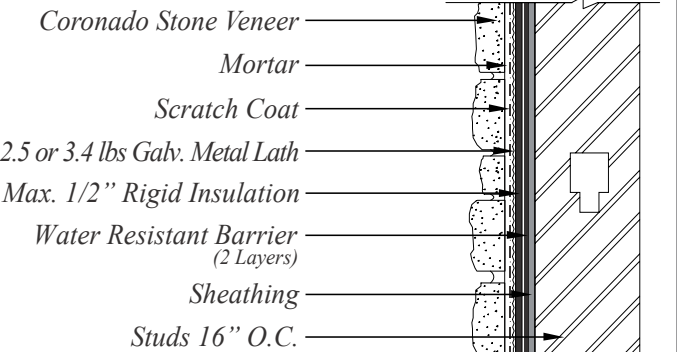
## WOOD FRAME WITH CEMENT BOARD



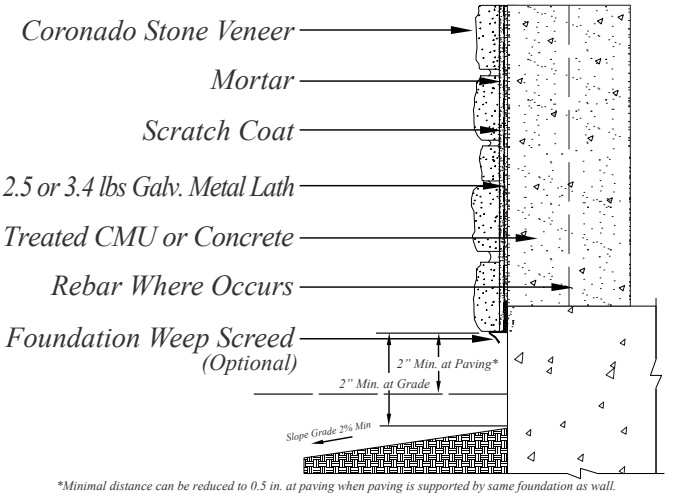
## UNTREATED / UNPAINTED CLEAN CMU



## STEEL FRAME WITH RIGID INSULATION

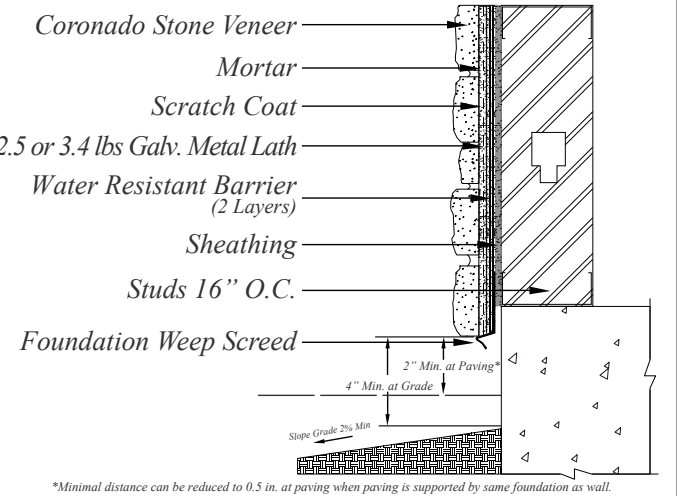


## TREATED / PAINTED CONCRETE



\*Minimal distance can be reduced to 0.5 in. at paving when paving is supported by same foundation as wall.

## STEEL FRAME WITH SHEATHING



\*Minimal distance can be reduced to 0.5 in. at paving when paving is supported by same foundation as wall.

For Additional Details Please Visit - <https://www.coronado.com/TechnicalDrawings>  
Drawings Not To Scale



CORONADO STONE SIZES



<i>Profile</i>	<i>Height</i>	<i>Length</i>	<i>Thickness</i>	<i>Weight</i>
3" Split Limestone	3"	up to 18"	1" - 1¾"	7 - 10 lbs.
6" Split Limestone	6"	30"	¾" - 1¼"	7 - 10 lbs.
8" Classic Jerusalem	8"	8" - 24"	1"	7 - 10 lbs.
Adobe Brick	3½" (±1/8")	15¼" (±¼")	1"	4 - 6 lbs.
Amalfi Ledge	2" and 6"*	up to 24"	1" - 1½"	7 - 10 lbs.
Appalachian Fieldstone	7" - 9"	7" - 9"	1½" - 2½"	7 - 10 lbs.
Artisan Ledge	4"*	up to 20"	1" - 1½"	7 - 10 lbs.
Barn WoodStone	4", 6" and 8"	36"	1"	7 - 10 lbs.
Belgian Brick	2½" (±1/16")	7¾" (±1/8")	⅝" (±1/16")	4 - 6 lbs.
Belgian Castle	2" - 12"	up to 16"	1"	7 - 10 lbs.
Canyon Ledge	1" - 7"	up to 20"	1½" - 3"	7 - 10 lbs.
Carolina Rubble	2" - 10"	4" - 16"	1¼" - 2¼"	7 - 10 lbs.
Chiseled Limestone	12"	24"	1"	7 - 10 lbs.
Colosseum Travertine	16"	24"	1"	7 - 10 lbs.
Coronado Honey Ledge	2" - 6"*	up to 20"	1" - 2"	7 - 10 lbs.
Coronado Strip Stone	1½" - 2"	up to 23"	1¼" to 2"	7 - 10 lbs.
Country Castle	1½" - 7½"	4" - 20"	1½"	7 - 10 lbs.
Country Rubble	2" - 8"	up to 23"	1" - 2½"	7 - 10 lbs.
Eastern Mountain Ledge®	1" - 5"*	up to 22"	1" - 3"	7 - 10 lbs.
Element LedgeStone	2" and 4"*	up to 20"	¾" - 2"	7 - 10 lbs.
French Country Villa®	2" - 7"	up to 18"	1½" - 2"	7 - 10 lbs.
French Limestone	12"	24"	1"	7 - 10 lbs.
The Getty Stone	16"	24"	1" - 1¾"	9 - 12 lbs.
Granite Peak	9"	18"	¾" - 1"	7 - 10 lbs.
Hill Country Limestone	12"	24"	1"	7 - 10 lbs.
Idaho Drystack	1" - 4"	4" - 16"	1¼" - 2"	7 - 10 lbs.
Industrial Ledge	2", 3", 4", 5" & 7"	4" - 30"	¾" - 2"	7 - 10 lbs.
Italian Villa®	2" - 8"	up to 18"	1½" - 2¾"	7 - 10 lbs.
Mountain Strip Stone	1½" and 3"	up to 23"	1¼" to 2"	7 - 10 lbs.
New England Brick	2⅝" (±1/16")	9½" (±1/8")	⅝" (±1/16")	4 - 6 lbs.
Old Country Ledge	2" - 7"	4" - 20"	1" - 1¾"	7 - 10 lbs.

<i>Profile</i>	<i>Height</i>	<i>Length</i>	<i>Thickness</i>	<i>Weight</i>
Old World Ledge	1" - 5"	4" - 16"	1" - 1½"	7 - 10 lbs.
Pavilion Stone	4" - 12"	4" - 20"	½" - 1"	7 - 10 lbs.
Playa Vista Limestone	2½", 5" and 7¾"	up to 24"	1" - 1½"	7 - 10 lbs.
Prairie Stone	1¾" and 3⅝"	up to 20"	1⅛"	7 - 10 lbs.
Pro-Ledge®	4"*	up to 20"	1" - 1½"	7 - 10 lbs.
Quick Stack®	2" or 4"*	up to 20"	1" - 2"	7 - 10 lbs.
Refined WoodStone	6"	36"	1"	7 - 10 lbs.
River Rock	2" - 10"	2" - 10"	¾" - 2½"	7 - 10 lbs.
Rocky Mountain Ledge	1" - 7"	up to 24"	1" - 2½"	7 - 10 lbs.
Roman Brick	2¼" (±1/8")	10" (±1/8")	⅝" (±1/16")	4 - 6 lbs.
Rough Cut WoodStone	6"	36"	1"	7 - 10 lbs.
Sand Canyon Flagstone	16"	30"	1"	9 - 12 lbs.
Santa Barbara	4" - 14"	8" - 30"	1¼" - 2"	9 - 12 lbs.
Sawtooth Ledge	3" and 6"	up to 20"	1"	7 - 10 lbs.
Sculptured Brick	2½" (±1/8")	7⅝" (±¼")	⅝" - 1"	4 - 6 lbs.
Sicilian Brick	2½" (±1/8")	7¾" (±1/8")	⅝" (±1/16")	4 - 6 lbs.
Smooth Limestone	12"	24"	1"	7 - 10 lbs.
Special Used Brick	2½" (±1/8")	7¾" (±¼")	⅝" (±1/16")	4 - 6 lbs.
Split Fieldstone	6" - 20"	6" - 20"	1" - 2"	7 - 10 lbs.
Texas Rubble	2" - 8"	up to 23"	1" - 2½"	7 - 10 lbs.
Tuscan Villa®	2" - 12"	4" - 16"	1" - 1¾"	7 - 10 lbs.
Urbana Smooth	7½"	15½"	1"	7 - 10 lbs.
Urbana Split	8"	16"	1"	7 - 10 lbs.
Venetian Villa®	2" - 14"	4" - 30"	1" - 2½"	7 - 10 lbs.
Weathered Edge	1" - 6"	up to 20"	1" - 2½"	7 - 10 lbs.
Wirecut Brick (Oversized)	3⅝" (±1/16")	11 ½" (±1/8")	⅝" (±1/16")	4 - 6 lbs.
Wirecut Brick (Standard)	2⅝" (±1/16")	7⅞" (±1/8")	⅝" (±1/16")	4 - 6 lbs.

All sizes and weights are nominal and may vary slightly depending on profile.  
Weight is based on one square foot of stone.  
Contact Coronado for further details.  
\* Stone sizes within panels may vary.

STONE COLOR INDEX & PROJECT IMAGE CREDITS

<i>Color</i>	<i>View Color On Page</i>
Antique Cream	36, 39, 49
Antique White	79, 80
Aspen	36, 50
Bear Creek	55, 83, 87, 91
Birch Grove	16, 30, 39, 46, 60
Blackened Oak	15, 79, 80
Black Forest	8, 12, 13, 31, 32, 70, 72, 73, 85
Bordeaux	17-18, 26
Brookside	29, 32, 44, 55, 87
Cape Cod Grey	27-28, 29, 35, 36, 39, 42, 44, 45, 51
Carmel Mountain	34, 36, 42, 46, 61
Cathedral Grey	30, 32, 35, 36, 52
Chablis	22, 29, 37, 40, 55
Chalk	19, 37, 42, 53, 54, 71, 95
Champagne	22, 24, 26
Coal	24, 25
Coastal Brown	19, 36, 38, 42, 50
Country Beige	65, 69
Cream	3-4, 9, 12, 13, 14, 63-64, 68, 70, 71, 74, 95, 96
Dakota Brown	22, 23, 37, 44, 50, 53, 61, 91, 93-94
Deadwood	78, 80
Eagle Buff	83, 87, 88
Etowah	2, 38, 40, 42
Florentine	23, 103
French White	65, 66, 69
Glacier	84, 86, 88
Greycliffe	41, 43
Grey Granite	10, 66, 97-98
Grey Quartzite	26, 33, 38, 39, 45, 49, 59, 60, 95, Back Cover
Huron	30, 32, 33, 38, 40, 41, 53
Iceberg	84, 86
Lompoc	61, 93-94, 95, 96
Monarch	39, 42
Mountain Sunset	57-58, 60
Mount Vernon	1, 6, 16
Northland	1, 2, 6, 16, 56
Oakbrook	15, 32
Provo Canyon Grey	21, 22, 38
Roman	63-64, 72
Rustic Farmhouse	75-76, 77
Sandstone	47-48, 52
Sienna	81-82, 92
Silver Ash	1, 5, 16, 65, 67, 69, 70, 71, 73, 74
Smoke	10, 66
Summer Cottage	1, 5, 51, 52
Summit Grey	Cover, 9, 11, 14
Texas Cream	49, 51, 54
Verona	22, 25
Vista Pointe	1, 2, 6, 11, 13, 16, 37, 39, 46
Volterra	21, 22, 25
Walnut	9, 11, 13
White	1, 5, 8, 12, 14, 16, 31, 32, 95
Winter Oak	84, 90
Wolf Grey	83, 85, 88, 89

Toll Brothers www.tollbrothers.com	Builder CA, AZ, NV	Cover, 3-4, 5, 19, 24, 30 31t, 35t, 52, 68, 79, 84 86, 90, 91, 103
Arthur Rutenberg Homes www.arthurrutenberghomes.com	Builder Clearwater, FL	Back Cover, 17-18, 21t, 49
Rob Harris Productions, Inc. www.rob-harris.com	Photographer Tampa, FL	Back Cover, 17-18, 21t, 49
David Weekley Homes www.davidweekleyhomes.com	Builder Phoenix, AZ	2
KB Home www.kbhome.com	Builder Los Angeles, CA	9
Lennar Homes www.lennar.com	Builder Miami, FL	10, 15, 75-76, 78, 80
Pardee Homes www.pardeehomes.com	Builder Bonsall, CA	13
SDK Atelier www.sdkatelier.com	Architect Irvine, CA	15
Eric Figge Photography www.ericfiggephoto.com	Photographer Orange, CA	15
Timber Ridge Properties www.timberridgeproperties.net	Builder Denver, CO	22, 50
Weber Design Group www.weberdesigngroup.com	Builder Naples, FL	23
Tom Harper www.tomharperphotography.com	Photographer Naples, FL	23
Partners In Building www.partnersinbuilding.com	Builder Houston, TX	31b
Sustain Scape www.sustainscapeaz.com	Landscape Designer Scottsdale, AZ	38
Process Design Build, L.L.C. www.processdesignbuild.com	Builder Tucson, AZ	44
Van Metre Homes www.vanmetrehomes.com	Builder Ashburn, VA	45
Veranda Estate Homes www.verandaestatehomes.com	Builder Calgary, AB	47-48
Shea Homes www.sheahomes.com	Builder Gilbert, AZ	55
Infinity Home Collection www.infinityhomecollection.com	Builder Denver, CO	69
Zephyr www.builtbyzephyr.com	Builder Encinitas, CA	72
Applied Photography LLC www.apgs.net	Photographer Orange, CA	75-76
CalAtlantic Homes www.calatlantichomes.com	Builder Las Vegas, NV	81-82
Camelot Homes www.camelothomes.com	Builder Scottsdale, AZ	83
Arizona Stone www.arizonastone.com	Distributor Phoenix, AZ	85
Mark Boisclair Photography, Inc. www.markboisclair.com	Photographer Phoenix, AZ	92
Maracay Homes www.maracayhomes.com	Builder Scottsdale, AZ	92





## 50 YEAR LIMITED WARRANTY

Coronado Stone Products® wall veneers are protected under this warranty for a period of 50 years from the date purchased, when used on a vertical structure which conforms to local building codes and when installed in accordance with the manufacturer's instructions.

Warranty coverage specifically excludes: damage resulting from structure settlement and other types of wall movement, contact with paint or chemicals, discoloration due to contaminants, staining, oxidation and water damage.

This warranty covers only manufacturing defects in Coronado Stone Products® wall veneers and is limited to the replacement or repair of defective materials only and does not cover the cost of removal or installation of defective products. This warranty is limited to the original purchaser and is non-transferable to any subsequent owner.



TUSCAN VILLA® - FLORENTINE

## NATIONWIDE MANUFACTURING

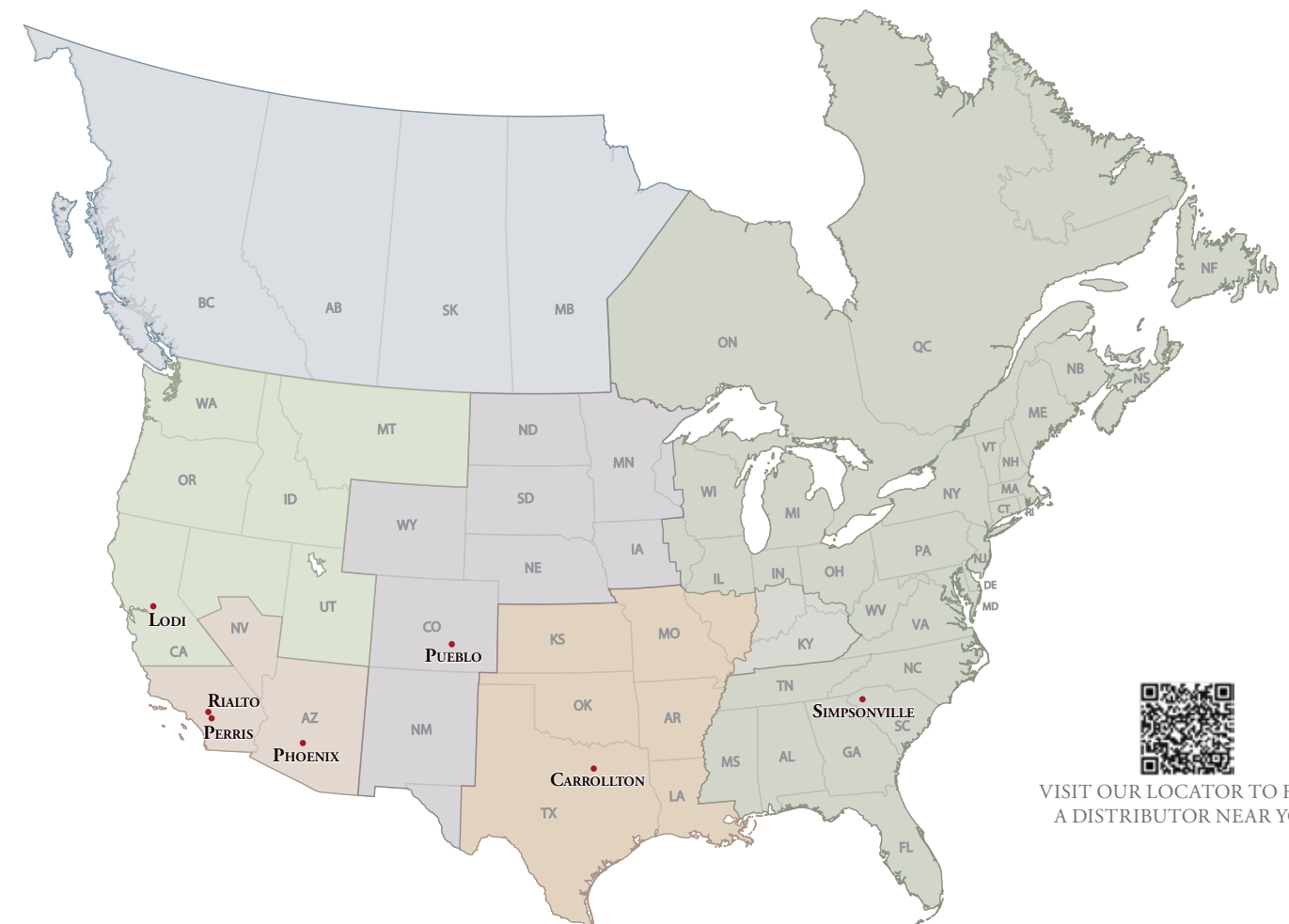
In 1960, there was only one stone manufactured in California. It was a 2½' x 4' sheet of concrete which was broken up into random shapes at the job site. Mel Bacon saw the need for something better and started making his own stone. He soon developed the first random shaped stones from individual molds which led to the development of many of today's popular varieties of ledge stones and ashlar patterns.

As a mason, Mel experienced the difficulty of installing stone that was not created with the installer in mind. It was heavy and the shapes and sizes were difficult to piece together. He realized that through proper pattern and mold design, ease of installation could be achieved. From that moment, ease of installation became the benchmark for every pattern of stone Mel created. Easy installation is not only a time saver, it's a project saver.

The pride we take in the creation of our product shows in the quality experience you will enjoy as one of our valued customers. Give Coronado® the opportunity to make you a believer. Our mission is your satisfaction!

## OVER 65 YEARS OF MANUFACTURING EXCELLENCE

**Coronado® manufactures and distributes its high quality stone at seven factories conveniently located across North America**



VISIT OUR LOCATOR TO FIND  
A DISTRIBUTOR NEAR YOU

Northwest Region serviced by the  
Lodi, CA Manufacturing Facility  
**(209) 334-1380**

Southwest Region serviced by the  
Perris, CA Manufacturing Facility  
**(800) 847-8663**

Mountain Region serviced by the  
Pueblo, CO Manufacturing Facility  
**(719) 470-7381**

Desert Region serviced by the  
Phoenix, AZ Manufacturing Facility  
**(602) 732-6558**

Central Region serviced by the  
Carrollton, TX Manufacturing Facility  
**(972) 434-2515**

Southeast Region serviced by the  
Simpsonville, SC Manufacturing Facility  
**(864) 962-1221**





OLD WORLD LEDGE - GREY QUARTZITE

Five Dollars

[www.CORONADO.com](http://www.CORONADO.com)

DUE TO PHOTOGRAPHIC AND PRINTING VARIATIONS, BROCHURE COLORS MAY NOT BE ACCURATE. ALL SIZES ARE NOMINAL.  
WE SUGGEST EXAMINATION OF CORONADO PRODUCT SAMPLES PRIOR TO PURCHASE.