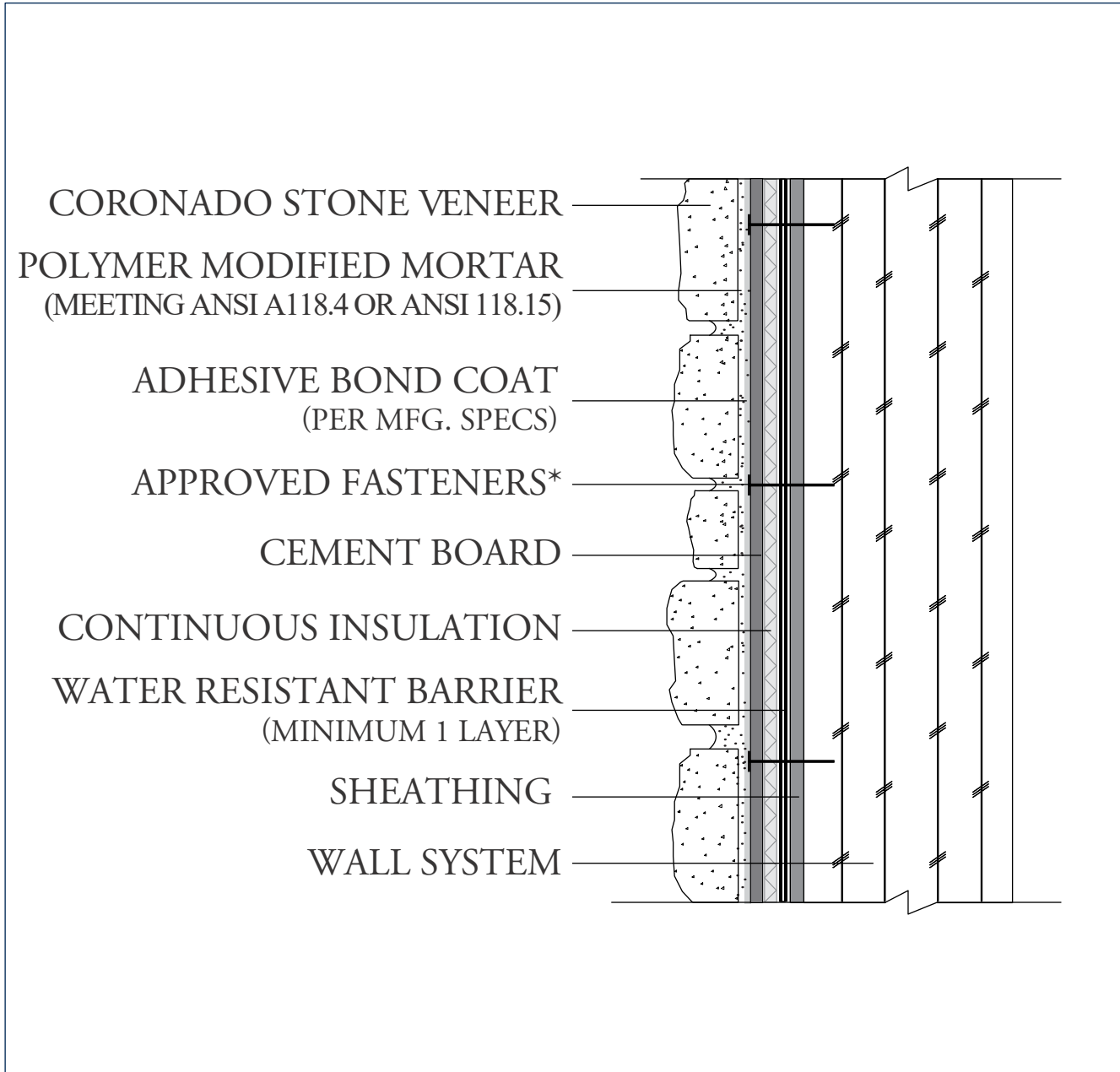




## WALL SECTION WITH CONTINUOUS RIGID INSULATION (EXTERIOR) (TYPICAL FRAMED CONSTRUCTION WITH CEMENT BOARD)



**NOT TO SCALE**

**\*FASTENER REQUIREMENTS:** FOR GUIDANCE WITH LATH FASTENING SYSTEM REFER TO THE FOAM SHEATHING COMMITTEE (FSC) WEBSITE.

**BUILDING CODES:** CHECK WITH YOUR LOCAL BUILDING AUTHORITIES TO ENSURE THAT YOUR PROJECT COMPLIES WITH ALL STATE AND LOCAL BUILDING CODES.

**MORTAR:** A POLYMER MODIFIED MORTAR SHOULD BE USED FOR ALL DRY-STACKED APPLICATIONS, INSTALLATIONS IN FREEZE/THAW ENVIRONMENTS AND FOR SOME LARGER/SPECIALTY STONE PRODUCTS.

**ADDITIONAL INFORMATION:** FOR STANDARD STONE INSTALLATIONS PLEASE REVIEW OUR SURFACE PREPARATION TABLE ON PAGE 4 OF OUR STANDARD STONE INSTALLATION GUIDE.