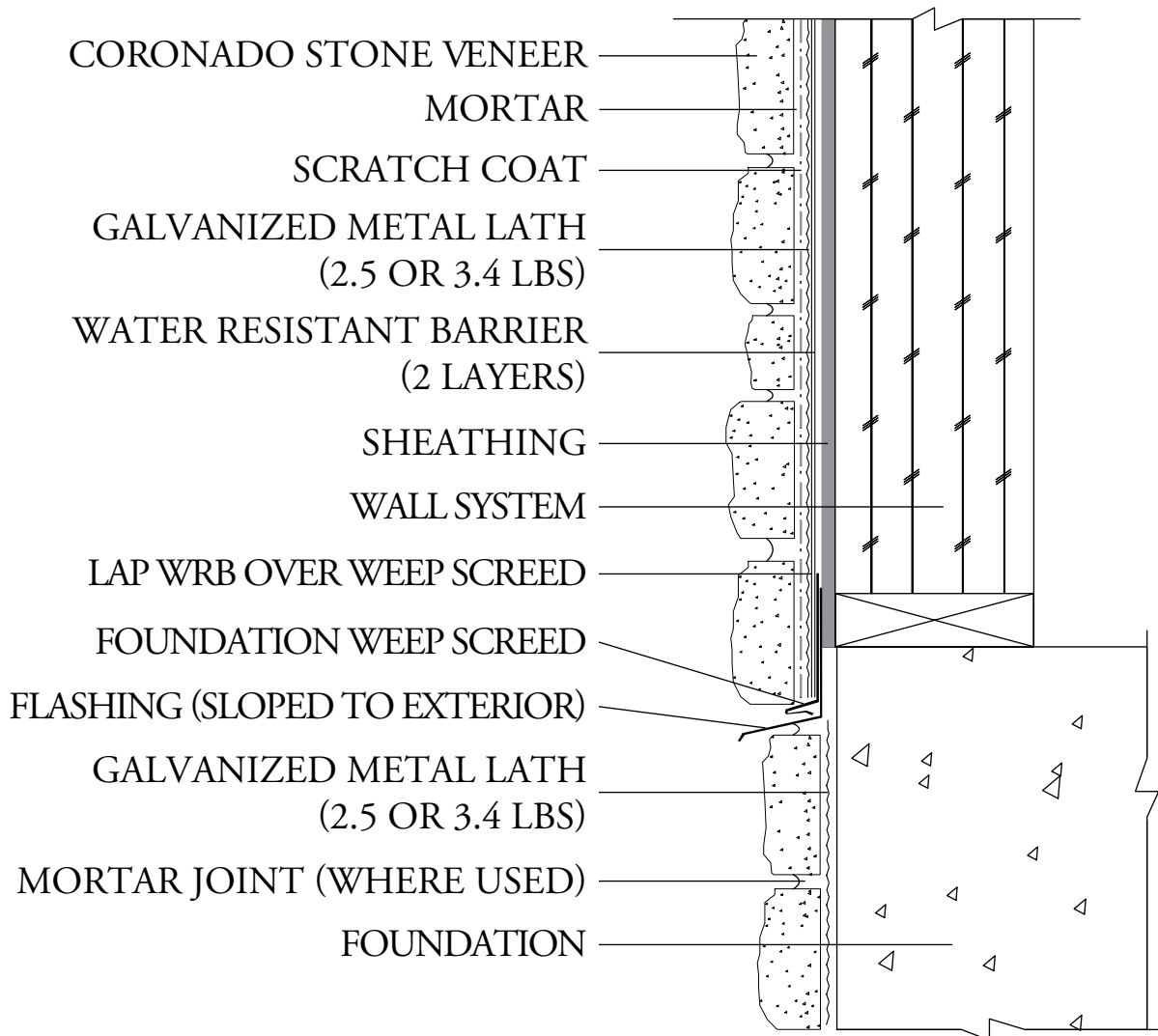




**TYPICAL FRAMED FOUNDATION WALL BASE
(TRANSITION TO AMSV CONTINUING DOWN FOUNDATION)**



NOT TO SCALE

BUILDING CODES: CHECK WITH YOUR LOCAL BUILDING AUTHORITIES TO ENSURE THAT YOUR PROJECT COMPLIES WITH ALL STATE AND LOCAL BUILDING CODES.

MORTAR: A POLYMER MODIFIED MORTAR SHOULD BE USED FOR ALL DRY-STACKED APPLICATIONS, INSTALLATIONS IN FREEZE/THAW ENVIRONMENTS AND FOR SOME LARGER/SPECIALTY STONE PRODUCTS.

ADDITIONAL INFORMATION: FOR STANDARD STONE INSTALLATIONS PLEASE REVIEW OUR SURFACE PREPARATION TABLE ON PAGE 4 OF OUR STANDARD STONE INSTALLATION GUIDE.