

## Installation Specifications

CSI – 3 Part Spec available at [www.CORONADO.com/ArchitecturalResources](http://www.CORONADO.com/ArchitecturalResources)

### Choices Specific to Smooth Limestone

- Standard Colors:** White Sands, Cream, Harvard Grey. Custom colors may be available for an upcharge.
- Grout Joint Width:** ¼" Grout Joint (nominal)
- Grouting Options:** Full Smooth Tooled
- Grout Joint Color:** Natural Grey, Natural Off-White or Complementary Color
- Accessories:** Corners, Keystones, Trim Stones, Wall Caps, Post Caps and more. (See Accessories section of binder)

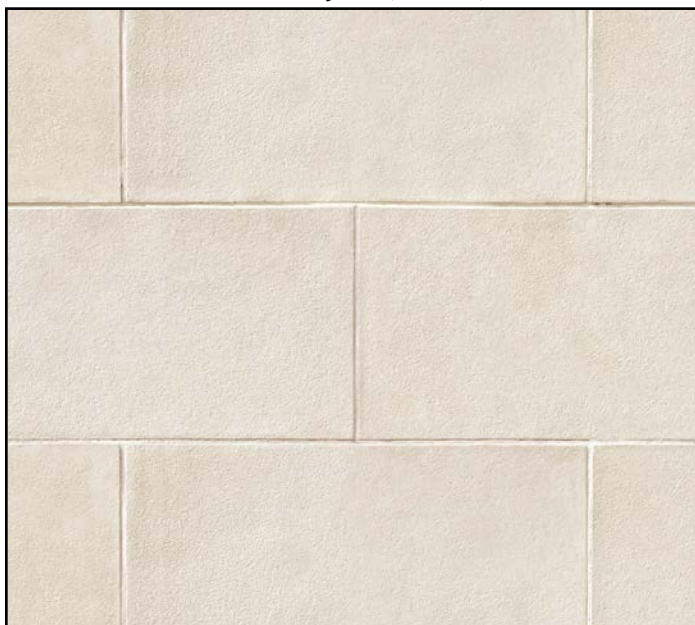
### Special Installation Notes

- Pattern:** Blend the stone on the wall from several different boxes to ensure proper color. *Due to the large profile of the Smooth Limestone, Coronado recommends selecting an installer that has previous experience with precast or large tile installations. See catalog photos for recommended installation pattern.*
- Chalk Lines:** Should be used by installer to ensure a straight and level pattern.
- Sealing:** Not required. However, if installed on an exterior exposed to excessive water from runoff or improper drainage, we suggest the product be sealed in that particular area to protect it from staining or spalling during freeze-thaw cycles.
- Freeze-Thaw:** When installing stone in a freeze-thaw environment, extra care should be taken to ensure a full coverage of mortar on the back of each stone, which will prevent water pooling behind the stone after it has been installed.
- Installation Info:** Download Coronado's latest Classic Series installation instructions at [www.coronado.com](http://www.coronado.com) for information on mortar and installation recommendations.

### Profile Properties

- Size:** Stone size is 12" in height and 24" in length. Corner returns are 3" for the short return and 15" for the long return (nominal). Also available in 6" Flats and Corners for use as continuous bands.
- Thickness:** 1" (nominal).
- Weight:** 7 to 10 lbs. per square foot.
- Packaging:** Product sold by the piece.

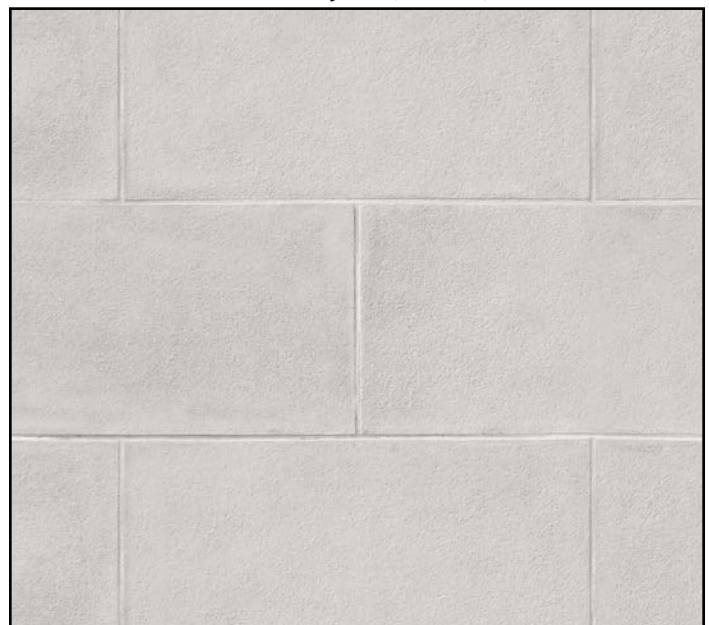
¼" Full Smooth Tooled Grout Joint (nominal)



SMOOTH LIMESTONE

COLOR: CREAM

¼" Full Smooth Tooled Grout Joint (nominal)



SMOOTH LIMESTONE

COLOR: HARVARD GREY